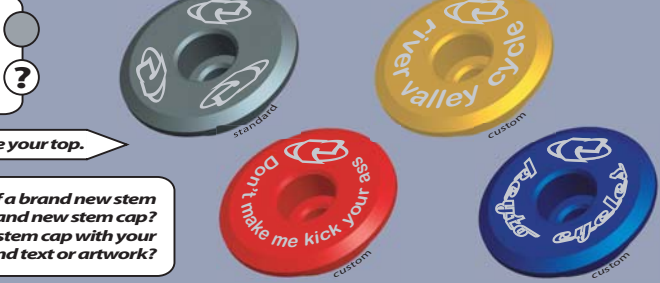


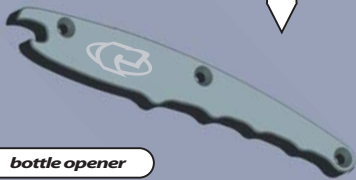
anodized 6061 - T6 aluminum  
laser engraved logos  
11 grams  
fits Ø 1 1/8" steerers & headsets  
quantity pricing available



don't lose your top.

what better way to finish off a brand new stem  
than with a brand new stem cap?  
better yet, how about a custom stem cap with your  
choice of color and text or artwork?

use only in case of emergency.



bottle opener

100% cotton. M, L & XL.



rammspeed  
mountainbike paraphernalia  
back

improve your farmer tan.

mountainbike paraphernalia

? custom anodizing

custom colors are available  
at an additional cost.  
not all products are available  
with all colors.

black		red	
grey		blue	
polished		green	
gold		orange	

rammspeed inc.  
PO Box 79092  
Sherwood Park, Alberta  
Canada  
T8A 2G0  
www.rammspeed.com

...be careful - pop rocks & cola will make you explode...support your local trail advocacy program...don't forget to do your kegals...props to kik & ham...

rammspeed

2005

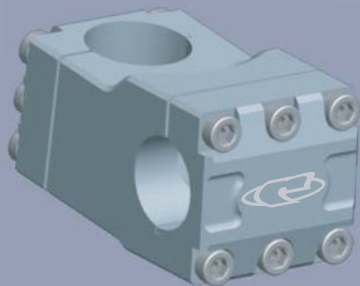
**stryker**  
PTR

built to last.



anodized 6061 - T6 aluminum  
laser engraved logos  
4mm thick walls  
450 grams  
heat treated after bending  
1.5" rise 9° sweep  
27" / 685mm length  
Ø 25.4mm clamp

thick 4 mm walls offer uncompromising strength. you'll never give this bar a second thought, especially when you should be focused on sticking your landing. and, with the one-year unconditional warranty, a replacement is on the way, no matter what happens when you finally do come back down to earth.

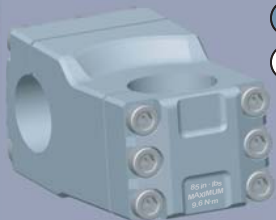


6 bolts at each end of this super stiff stem generate phenomenal clamping power on your bar and steerer. you get tighter steering and quicker response. and, to prevent stripped threads or a crushed steerer, the torque spec is engraved on the back plate of every stem.

anodized 6061 - T6 aluminum  
engraved logos  
385 grams (50mm)  
50 mm or 75mm x 5° rise  
Ø 25.4 mm bar  
Ø 1.125" steerer  
stainless steel hardware

brick shithouse.

**4T3**



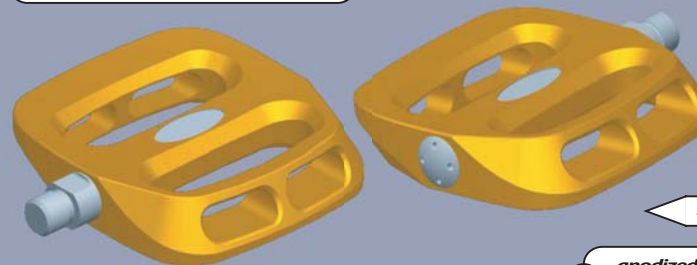
this bashguard is designed to replace your outer chainring and sits extremely close to the chain, which prevents chainsuck between the guard and the ring. plus, it has the same outside diameter as a chainring with a chain around it, so your teeth are protected without losing any ground clearance. each bashguard is also available with teeth.

dental plan.

anodized 6061 - T6 aluminum  
engraved logos  
6mm thick  
125 grams (smooth 36T x 104mm)  
sizes: 32T, 34T, 36T, 42T, 44T, 46T  
BCD: 4 x 104mm or 5 x 110mm



bling ring



sure footing.

a beefy spindle doesn't have to mean bulky pedals. dual bronze bushings allow for a Ø 12mm spindle, while keeping overall thickness to a minimum. as a result, your bike feels more like a natural extension of your legs. plus, each pedal is sealed for a long life and is completely rebuildable.

anodized 6061 - T6 aluminum body  
heat treated 4140 cromoly spindle  
low profile sealed design  
dual bronze bushings  
750 grams per set  
Ø 12mm spindle with 9/16" threads  
10 replaceable steel setscrews per side

**COMING  
SUMMER 2005**